

PK 63002 EH

THE COUNTINOUS SLEWING SYSTEM INCREASES THE EFFICIENCY IN USE DURING THE CRANE'S ENTIRE LIFETIME.

LIFETIME EXCELLENCE



PROFITABLE HEAVY-DUTY CRANE TECHNOLOGY

- More lifting power due to E-HPLS
- Maximum utilisation of the working range thanks to HPSC
- Additional applications due to Power Link Plus
- Continuous slewing for increased efficiency and speed
- Increased operating times due to low maintenance extensions system





FIRST-RATE IN DESIGN AND PERFORMANCE



Coating technology

Top quality surface protection at a glance

The KTL coating lays the foundation for a perfect surface protection. Afterwards the components are either coated in the powder-coating facility or are finished with a two-components-topcoat. High value retention and excellent corrosion protection for the whole life of a crane.



Power Link Plus

High variety of uses

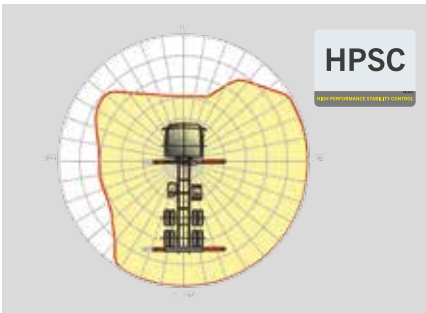
With the 15-degree reverse linkage system, you can reach through low door openings and also work inside buildings. Heavy crane work – even in difficult conditions.



Low-maintenance extension system

Reduces service time

With sliding elements made of synthetic material and the high-quality KTL coating, this boom system significantly simplifies service performed by the operator. This saves time and money – and protects the environment.



HPSC

Maximum utilisation of the working range

The variable stabiliser positioning of the High Performance Stability Control System makes it possible to utilise the lifting capacity to the maximum. It enables working within tight spaces.



High Speed Extension

For efficient assignments

The High Speed Extension speeds up the extension boom system. Crane works faster and more efficiently.



Radio remote control

Dialogue with the operator

PALFINGER radio remote controls are equipped with linear lever or cross lever and provide the greatest possible comfort for the operator. All EH models with LED-Display inform the crane operator about the different operating conditions.



Power Link cable winch

More comfort in cable winch operation

Characterised by low installation height, it is ideal for working inside buildings and transports with the crane boom unfolded. The Comfort Cable Routing reduces set-up times to a minimum.



Functional design

Practical and attractive

Robust plastic covers protect crane parts against dirt and damage. Better appearance and increased operational comfort – during the entire lifetime.



Continuous slewing system

Unrestricted movement

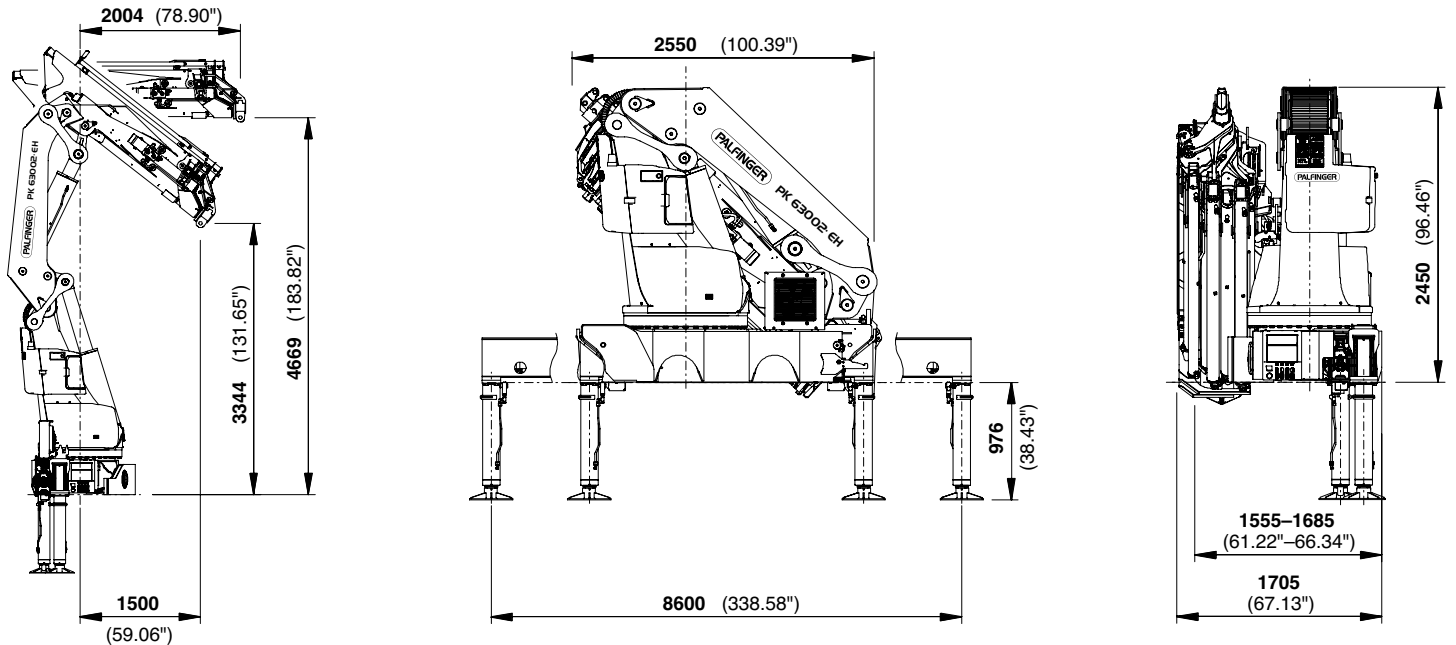
More efficient in operation due to faster loading cycles, since the crane can be slewed over a shorter distance. The crane works more efficiently and faster.

PERFECT DIMENSIONS

Technical specifications EN12999 HC1 HD4/B3

Max. lifting moment	59.4 mt/582.7 kNm	429740 ft.lbs	Stabiliser spread	8.6 m	28' 3"
Max. lifting capacity	22000 kg/215.8 kN	48500 lbs	Fitting space required (min. / max.)	1.56 m / 5' 1"	1.71 m / 5' 7"
Max. hydraulic outreach	20.4 m	66' 11"	Width folded	2.55 m	8' 4"
Max. manual outreach	25.1 m	82' 4"	Max. operating pressure	350 bar	5075 psi
max. outreach (with fly-jib)	30.4 m	99' 9"	Recommended pump capacity	from 80 l/min to 100 l/min	21.1 US gal./min 26.4 US gal./min
Slewing angle	endless		Dead weight (std.)	5040 kg	11110 lbs
Slewing torque 1 gear	4.5 mt/44.1 kNm	32560 ft.lbs			
Slewing torque 2 gears	7.0 mt/68.7 kNm	50640 ft.lbs			

DIMENSIONS



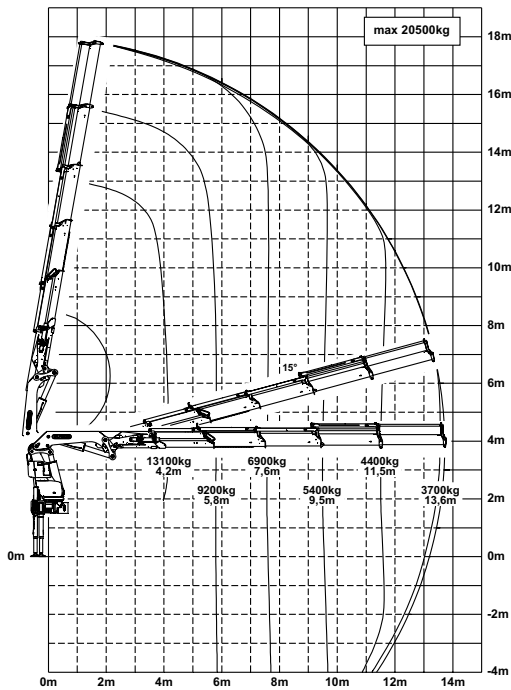
*Optional features / country-specific equipment

PK 63002

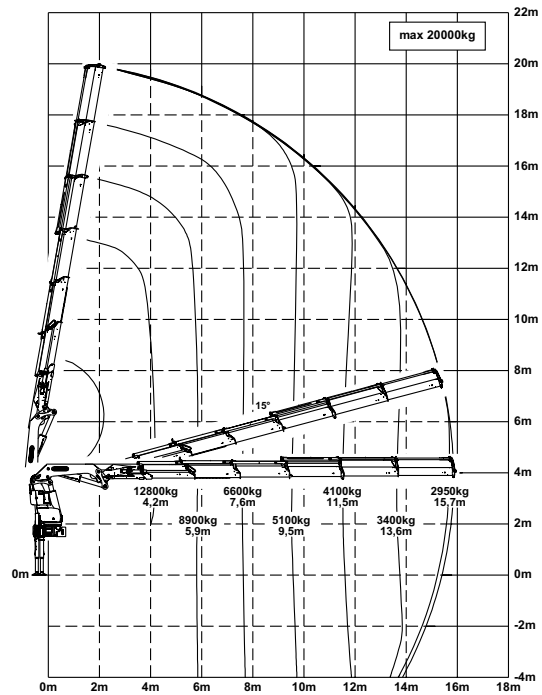
HIGH PERFORMANCE

Perfect for high outreaches.

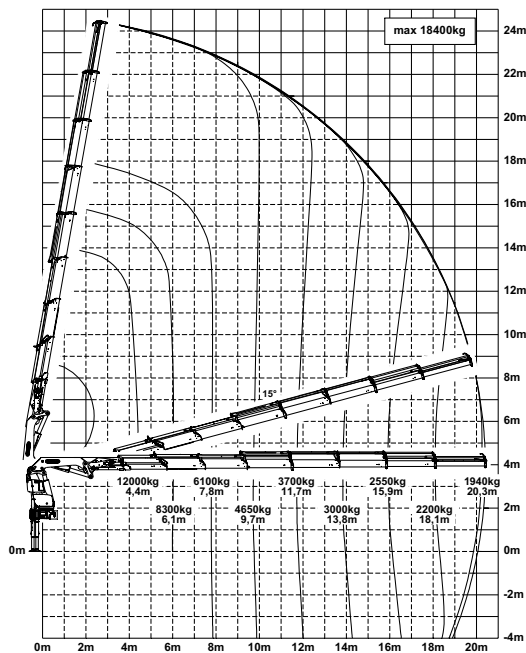
D



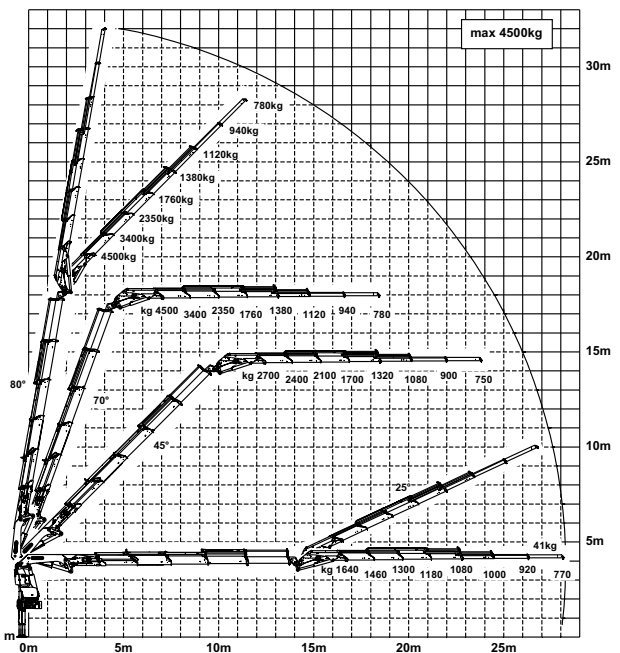
E



G



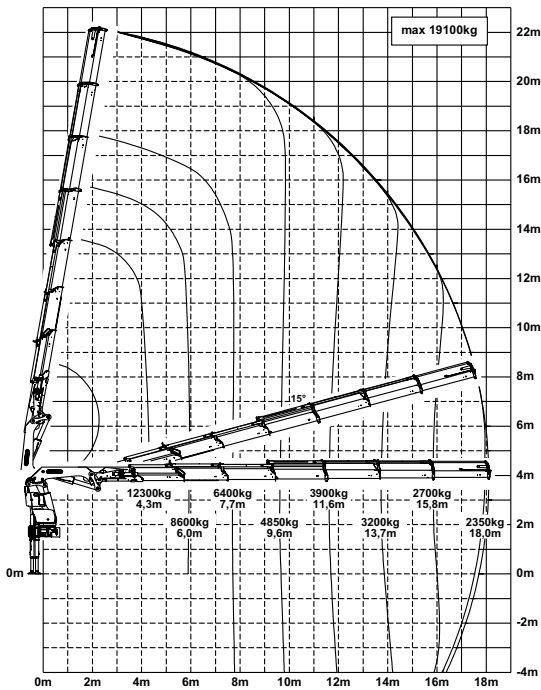
D PJ170E JV1



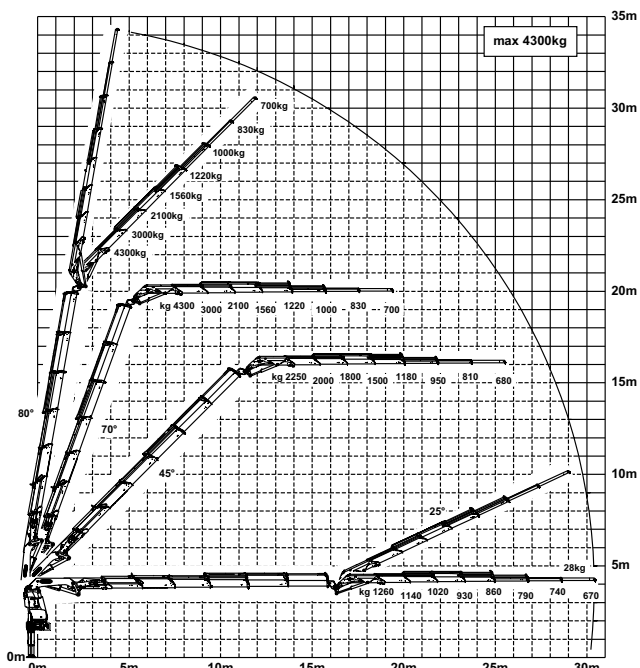
The outreaches stated are with a boom angle of 20° and are therefore not the maximum.

Lifting capacities

F



E PJ125E JV1



max.		21800 kg	48100 lbs	A
4.0 m	13 ft	14200 kg	31300 lbs	
5.7 m	19 ft	10200 kg	22400 lbs	
7.4 m	24 ft	7900 kg	17300 lbs	

max.		21500 kg	47400 lbs	B
4.1 m	13 ft	13900 kg	30600 lbs	
5.7 m	19 ft	9900 kg	21700 lbs	
7.5 m	24 ft	7500 kg	16600 lbs	
9.4 m	31 ft	6000 kg	13200 lbs	

max.		21300 kg	47000 lbs	C
4.1 m	13 ft	13700 kg	30100 lbs	
5.7 m	19 ft	9600 kg	21200 lbs	
7.5 m	24 ft	7300 kg	16000 lbs	
9.4 m	31 ft	5800 kg	12700 lbs	
11.4 m	37 ft	4750 kg	10400 lbs	

max.		20500 kg	45200 lbs	D
4.2 m	13 ft	13100 kg	28800 lbs	
5.8 m	19 ft	9200 kg	20300 lbs	
7.6 m	25 ft	6900 kg	15200 lbs	
9.5 m	31 ft	5400 kg	11900 lbs	
11.5 m	38 ft	4400 kg	9700 lbs	
13.6 m	45 ft	3700 kg	8200 lbs	

max.		20000 kg	44100 lbs	E
4.2 m	14 ft	12800 kg	28100 lbs	
5.9 m	19 ft	8900 kg	19600 lbs	
7.6 m	25 ft	6600 kg	14600 lbs	
9.5 m	31 ft	5100 kg	11300 lbs	
11.5 m	38 ft	4100 kg	9100 lbs	
13.6 m	45 ft	3400 kg	7500 lbs	
15.7 m	52 ft	2950 kg	6500 lbs	

max.		19100 kg	42100 lbs	F
4.3 m	14 ft	12300 kg	27200 lbs	
6.0 m	20 ft	8600 kg	18900 lbs	
7.7 m	25 ft	6400 kg	14000 lbs	
9.6 m	32 ft	4850 kg	10700 lbs	
11.6 m	38 ft	3900 kg	8500 lbs	
13.7 m	45 ft	3200 kg	7000 lbs	
15.8 m	52 ft	2700 kg	6000 lbs	
18.0 m	59 ft	2350 kg	5200 lbs	

max.		18400 kg	40600 lbs	G
4.4 m	14 ft	12000 kg	26300 lbs	
6.1 m	20 ft	8300 kg	18300 lbs	
7.8 m	26 ft	6100 kg	13500 lbs	
9.7 m	32 ft	4650 kg	10300 lbs	
11.7 m	38 ft	3700 kg	8100 lbs	
13.8 m	45 ft	3000 kg	6600 lbs	
15.9 m	52 ft	2550 kg	5600 lbs	
18.1 m	59 ft	2200 kg	4850 lbs	
20.3 m	66 ft	1940 kg	4300 lbs	
22.6 m*	74 ft	1660 kg	3650 lbs	
24.9 m*	82 ft	1000 kg	2200 lbs	

*mechanical extension



KP-HPK63002EHM2+EN

Cranes shown in the leaflet are partially optional equipped and do not always correspond to the standard version. Country-specific regulations must be observed. Dimensions may vary. Subject to technical changes, errors and translation mistakes.